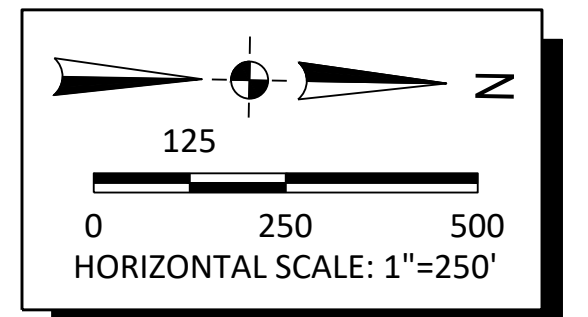


STORM ALIGNMENT	SHEET REFERENCE
STRM 1 [TOPEKA]	24
STRM 2 [TOPEKA]	24
STRM 3 [TOPEKA]	25
STRM 4 [TOPEKA]	25
STRM 5 [TOPEKA]	25
STRM 6 [TOPEKA]	26
STRM 7 [TOPEKA]	26
STRM 8 [TOPEKA]	27
STRM 9 [TOPEKA]	28
STRM 10 [TOPEKA]	28
STRM 11 [TOPEKA]	28
STRM 12 [TOPEKA]	29
STRM 13 [TOPEKA]	29
STRM 14 [TOPEKA]	30-31
STRM 15 [TOPEKA]	32
STRM 16 [TOPEKA]	32
STRM 17 [TOPEKA]	32



File Location: Y:\Kansas\1325-60005\00_Topeka_Bldg\Eng_Docs\General\Sheets\1325-60005-PROD-GEN STORM LAYOUT (TOPEKA BLVD).dwg | Plot Date: 4/17/2026 1:48:26 PM | Last Saved: 4/16/2026 5:16:36 PM | Printer:

NO.	DATE:	REVISION	BY:	APP'D

DRAWN BY: _____
 APP'D BY: _____

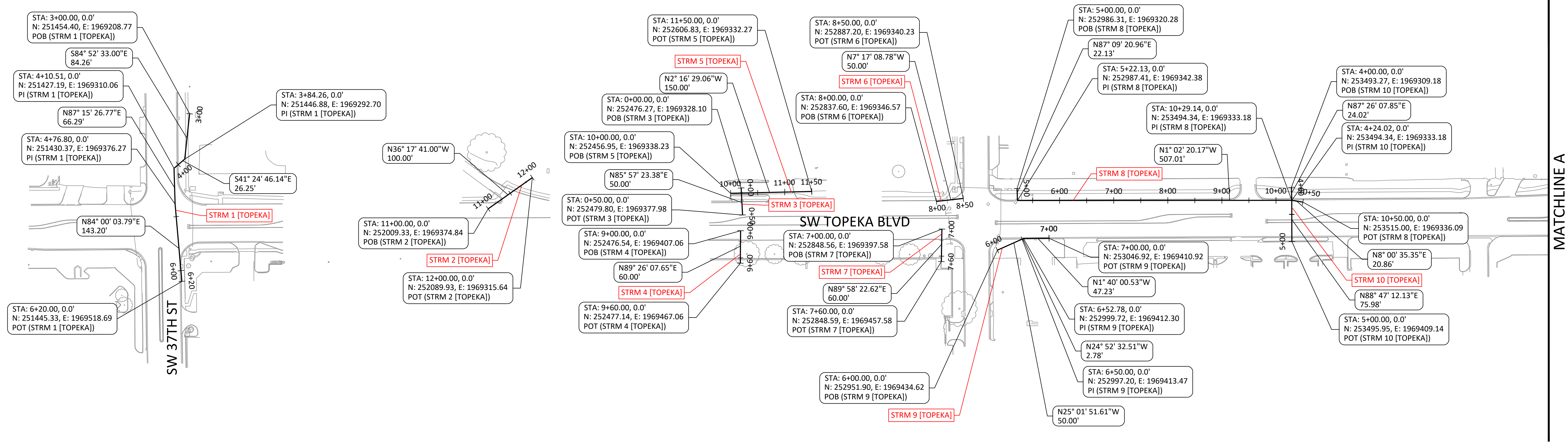
benesch
 Alfred Benesch & Company
 123 SE 6th, Suite 200
 Topeka, Kansas 66603
 Ph 785.409.6507 Job No. - 1325-600005.00

TOPEKA
Public Works
ENGINEERING
 620 SE MADISON St. • 2nd Floor • TOPEKA, KS 66607
 Phone: (785) 368-3842 • Fax: (785) 368-3881

TOPEKA BLVD
 IMPROVEMENTS:
 PROJECT #701038.00

GENERAL ALIGNMENT STORM LAYOUT

DATE: APR 2026
 SHEET: 8 OF 122
 PROJ.: 701038.00



STORM ALIGNMENT CONTROL [TOPEKA BLVD]
Scale: 1" = 100' (Full Size)

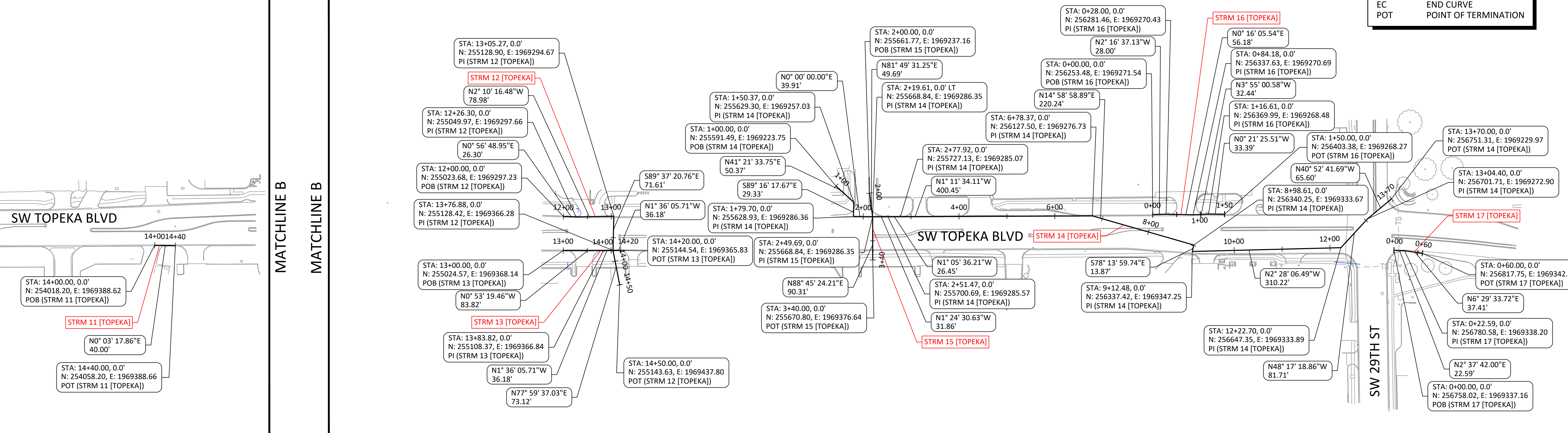
LEGEND	
POB	POINT OF BEGINNING
PI	POINT OF INTERSECTION
BC	BEGIN CURVE
EC	END CURVE
POT	POINT OF TERMINATION

MATCHLINE A

MATCHLINE A

MATCHLINE B

MATCHLINE B



STORM ALIGNMENT CONTROL [TOPEKA BLVD]
Scale: 1" = 100' (Full Size)

NO.	DATE:	REVISION	BY:	APPD

DRAWN BY: _____
APPD BY: _____

benesch
Alfred Benesch & Company
123 SE 6th, Suite 200
Topeka, Kansas 66603
Ph 785.409.6507

TOPEKA
Public Works
ENGINEERING
620 SE MADISON St. • 2nd Floor • TOPEKA, KS 66607
Phone: (785) 368-3842 • Fax: (785) 368-3881

TOPEKA BLVD
IMPROVEMENTS:
PROJECT #701038.00

STORM ALIGNMENT AND SURVEY
CONTROL PLAN

DATE: APR 2026
SHEET: 9 OF 122
PROJ.: 701038.00

File Location: Y:\Kansas\132x-605\1325-60005-PROD-ALIGN-CTRL-STORM.dwg | Plot Date: 4/20/2026 11:01:36 AM | Last Saved: 4/20/2026 11:00:22 AM | Jremier

File Location: Y:\Kansas\1326-605\1325-600005-00_Topeka_Bldg\Eng_Docs\General\Sheets\1325-600005-PROD-AUGN-CNTR-STRM.dwg [Plot Date: 4/17/2026 1:49:19 PM] [Last Saved: 4/17/2026 9:44:28 AM, Jrentler]

Alignment Name: STRM 1 [TOPEKA] Station Range: Start: 3+00.00 End: 6+20.00				
PI Station	Northing	Easting	Distance	Direction
POB 3+00.00	251454.40	1969208.77	84.26'	S84° 52' 33"E
PI 3+84.26	251446.88	1969292.70	26.25'	S41° 24' 46"E
PI 4+10.51	251427.19	1969310.06	66.29'	N87° 15' 27"E
PI 4+76.80	251430.37	1969376.27	143.20'	N84° 00' 04"E
POT 6+20.00	251445.33	1969518.69		
Alignment Name: STRM 2 [TOPEKA] Station Range: Start: 11+00.00 End: 12+00.00				
PI Station	Northing	Easting	Distance	Direction
POB 11+00.00	252009.33	1969374.84	100.00'	N36° 17' 41"W
POT 12+00.00	252089.93	1969315.64		
Alignment Name: STRM 3 [TOPEKA] Station Range: Start: 0+00.00 End: 0+50.00				
PI Station	Northing	Easting	Distance	Direction
POB 0+00.00	252476.27	1969328.10	50.00'	N85° 57' 23"E
POT 0+50.00	252479.80	1969377.98		
Alignment Name: STRM 4 [TOPEKA] Station Range: Start: 9+00.00 End: 9+60.00				
PI Station	Northing	Easting	Distance	Direction
POB 9+00.00	252476.54	1969407.06	60.00'	N89° 26' 08"E
POT 9+60.00	252477.14	1969467.06		
Alignment Name: STRM 5 [TOPEKA] Station Range: Start: 10+00.00 End: 11+50.00				
PI Station	Northing	Easting	Distance	Direction
POB 10+00.00	252456.95	1969338.23	150.00'	N2° 16' 29"W
POT 11+50.00	252606.83	1969332.27		
Alignment Name: STRM 6 [TOPEKA] Station Range: Start: 8+00.00 End: 8+50.00				
PI Station	Northing	Easting	Distance	Direction
POB 8+00.00	252837.60	1969346.57	50.00'	N7° 17' 09"W
POT 8+50.00	252887.20	1969340.23		
Alignment Name: STRM 7 [TOPEKA] Station Range: Start: 7+00.00 End: 7+60.00				
PI Station	Northing	Easting	Distance	Direction
POB 7+00.00	252848.56	1969397.58	60.00'	N89° 58' 23"E
POT 7+60.00	252848.59	1969457.58		
Alignment Name: STRM 8 [TOPEKA] Station Range: Start: 5+00.00 End: 10+50.00				
PI Station	Northing	Easting	Distance	Direction
POB 5+00.00	252986.31	1969320.28	22.13'	N87° 09' 21"E
PI 5+22.13	252987.41	1969342.38	507.01'	N1° 02' 20"W
PI 10+29.14	253494.34	1969333.18	20.86'	N8° 00' 35"E
POT 10+50.00	253515.00	1969336.09		
Alignment Name: STRM 9 [TOPEKA] Station Range: Start: 6+00.00 End: 7+00.00				
PI Station	Northing	Easting	Distance	Direction
POB 6+00.00	252951.90	1969434.62	50.00'	N25° 01' 52"W
PI 6+50.00	252997.72	1969412.30	2.78'	N24° 52' 33"W
PI 6+52.78	252999.72	1969412.30	47.23	N1° 40' 01"W
POT 7+00.00	253047.25	1969408.49		
Alignment Name: STRM 10 [TOPEKA] Station Range: Start: 4+00.00 End: 5+00.00				
PI Station	Northing	Easting	Distance	Direction
POB 4+00.00	253493.27	1969309.18	24.02'	N87° 26' 08"E
PI 4+24.02	253494.34	1969333.18	75.98'	N88° 47' 12"E
POT 5+00.00	253495.95	1969409.14		

Alignment Name: STRM 11 [TOPEKA] Station Range: Start: 14+00.00 End: 14+40.00				
PI Station	Northing	Easting	Distance	Direction
POB 14+00.00	254018.20	1969388.62	40.00'	N0° 03' 18"E
POT 14+40.00	254058.20	1969388.66		
Alignment Name: STRM 12 [TOPEKA] Station Range: Start: 12+00.00 End: 14+50.00				
PI Station	Northing	Easting	Distance	Direction
POB 12+00.00	255023.68	1969297.23	26.30'	N0° 56' 49"E
PI 12+26.30	255049.97	1969297.66	78.98'	N2° 10' 16"W
PI 13+05.27	255128.90	1969294.67	71.61'	S89° 37' 21"E
PI 13+76.88	255128.42	1969366.28	73.12'	N77° 59' 37"E
POT 14+50.00	255143.63	1969437.80		
Alignment Name: STRM 13 [TOPEKA] Station Range: Start: 13+00.00 End: 14+20.00				
PI Station	Northing	Easting	Distance	Direction
POB 13+00.00	255024.57	1969368.14	83.82'	N0° 53' 19"W
PI 13+83.82	255108.37	1969366.84	36.18'	N1° 36' 06"W
POT 14+20.00	255144.54	1969365.83		
Alignment Name: STRM 14 [TOPEKA] Station Range: Start: 1+00.00 End: 13+70.00				
PI Station	Northing	Easting	Distance	Direction
POB 1+00.00	255591.49	1969223.75	50.37'	N41° 21' 34"E
PI 1+50.37	255629.30	1969257.03	29.33'	S89° 16' 18"E
PI 1+79.70	255628.93	1969286.36	39.91'	N0° 00' 00"E
PI 2+19.61	255668.84	1969286.36	31.86'	N1° 24' 31"W
PI 2+51.47	255700.69	1969285.57	26.45'	N1° 05' 36"W
PI 2+77.92	255727.13	1969285.07	400.45'	N1° 11' 34"W
PI 6+78.37	256127.50	1969276.73	220.24'	N14° 58' 59"E
PI 8+98.61	256340.25	1969333.67	13.87'	S78° 14' 00"E
PI 9+12.48	256337.42	1969347.25	310.22'	N2° 28' 06"W
PI 12+22.70	256647.35	1969333.89	81.71'	N48° 17' 19"W
PI 13+04.40	256701.71	1969272.90	65.60'	N40° 52' 42"W
POT 13+70.00	256751.31	1969229.97		
Alignment Name: STRM 15 [TOPEKA] Station Range: Start: 2+00.00 End: 3+40.00				
PI Station	Northing	Easting	Distance	Direction
POB 2+00.00	255661.77	1969237.16	49.69'	N81° 49' 31"E
PI 2+49.69	255668.84	1969286.35	90.31'	N88° 45' 24"E
POT 3+40.00	255670.80	1969376.64		
Alignment Name: STRM 16 [TOPEKA] Station Range: Start: 0+00.00 End: 1+50.00				
PI Station	Northing	Easting	Distance	Direction
POB 0+00.00	256253.48	1969271.54	28.00'	N2° 16' 37"W
PI 0+28.00	256281.46	1969270.43	56.18'	N0° 16' 06"E
PI 0+84.18	256337.63	1969270.69	32.44'	N3° 55' 01"W
PI 1+16.61	256369.99	1969268.48	33.39'	N0° 21' 26"W
POT 1+50.00	256403.38	1969268.27		
Alignment Name: STRM 17 [TOPEKA] Station Range: Start: 0+00.00 End: 0+60.00				
PI Station	Northing	Easting	Distance	Direction
POB 0+00.00	256758.02	1969337.16	22.59'	N2° 37' 42"E
PI 0+22.58	256780.59	1969337.87	37.41'	N6° 29' 34"E
POT 0+60.00	256817.75	1969342.43		

LEGEND	
POB	POINT OF BEGINNING
PI	POINT OF INTERSECTION
BC	BEGIN CURVE
EC	END CURVE
POT	POINT OF TERMINATION

NO.	DATE	REVISION	BY	APPD

DRAWN BY: _____
 APPD BY: _____



Alfred Benesch & Company
 123 SE 6th, Suite 200
 Topeka, Kansas 66603
 Ph 785.409.6507 Job No. - 1325-600005.00



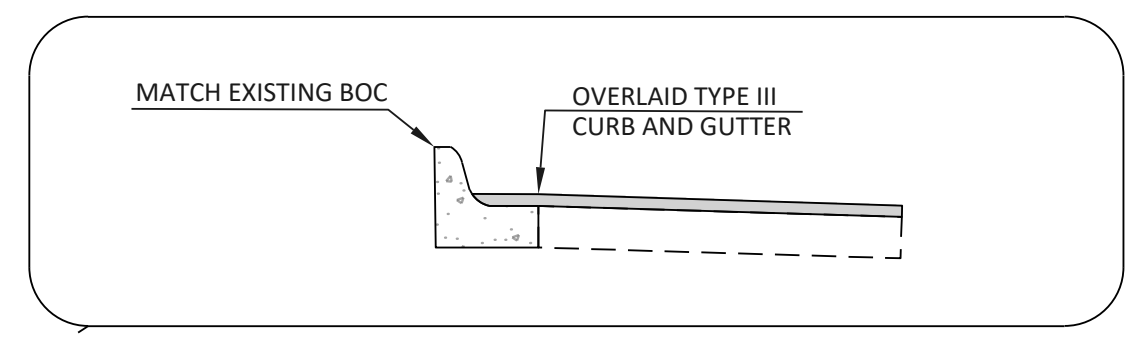
620 SE MADISON St. • 2nd Floor • TOPEKA, KS 66607
 Phone: (785) 368-3842 • Fax: (785) 368-3881

TOPEKA BLVD
 IMPROVEMENTS:
 PROJECT #701038.00

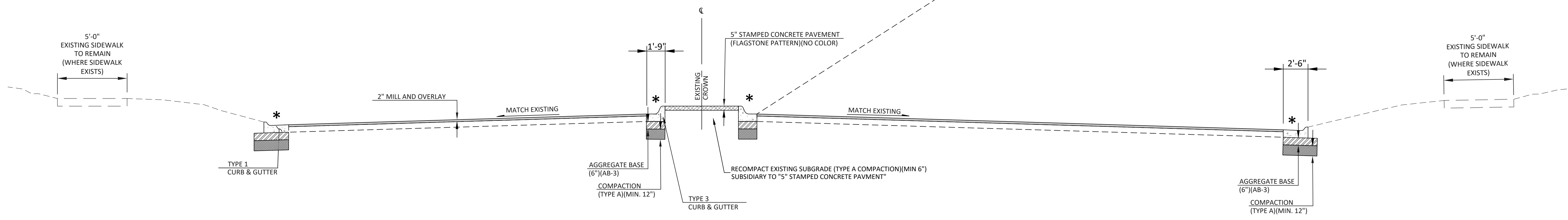
STORM ALIGNMENT AND SURVEY
 CONTROL PLAN

DATE: APR 2026
 SHEET: 10 OF 122
 PROJ.: 701038.00

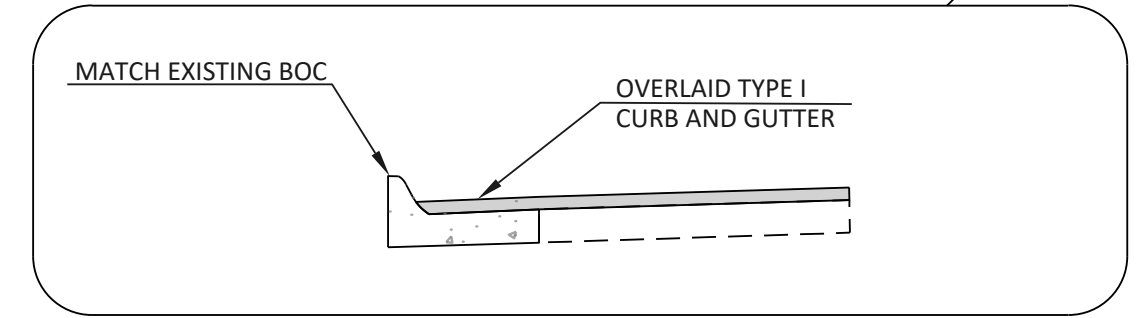
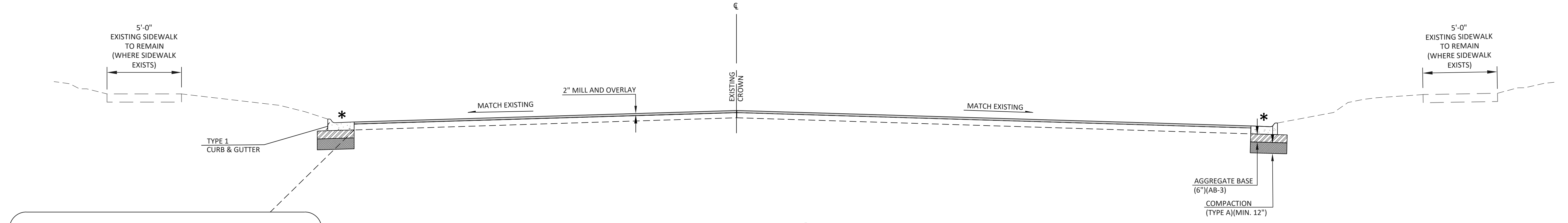
File Location: Y:\Kansas\132x605\1325-600005-00_Topeka_Bldg\Eng_Docs\General\Sheets\1325-600005-PRD-TYP SECS (TOPEKA BLDG).dwg | Plot Date: 4/17/2026 1:49:31 PM | Last Saved: 4/9/2026 8:15:46 AM | User:



TYPICAL SECTION NOTES:
 * WHERE CURB REPLACEMENT IS NEEDED, COMPACTION AND SUB-BASE AS SHOWN. SEE PLAN LOCATIONS.

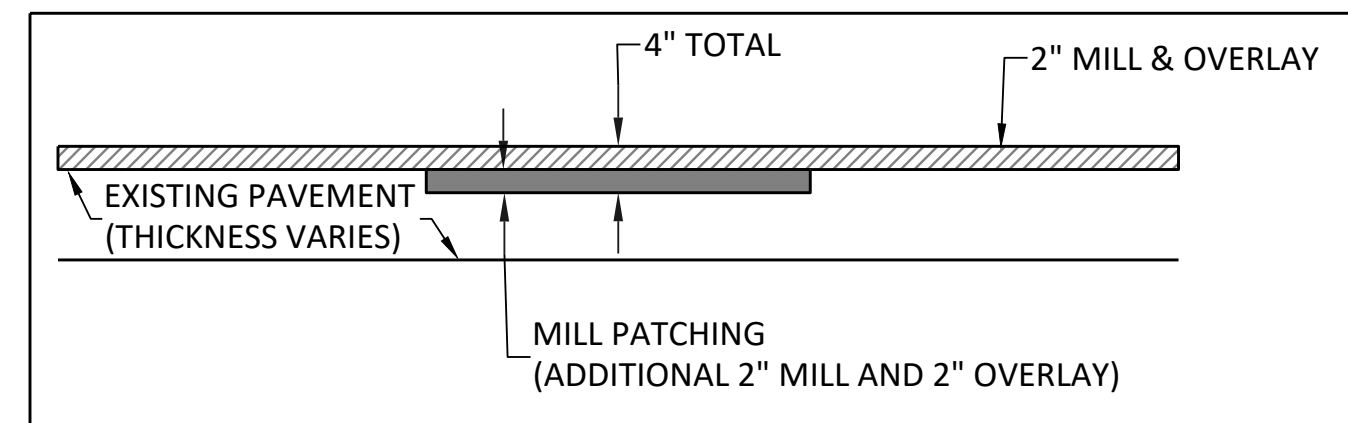


A TYPICAL SECTION NO. 1
 Scale: NTS
 MILL AND OVERLAY (AT MEDIAN LOCATIONS)

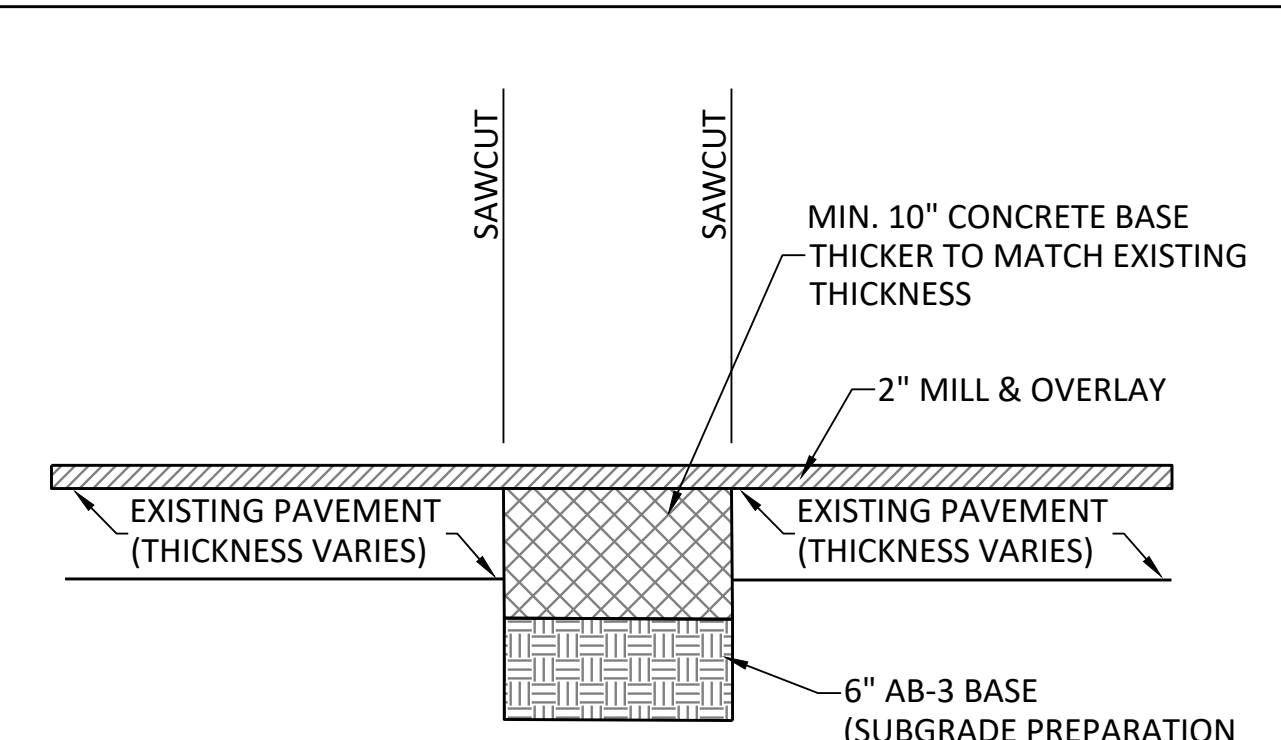


WHERE EXISTING GUTTER PAN IS OVERLAID (TYPE I)

B TYPICAL SECTION NO. 2
 Scale: NTS
 MILL AND OVERLAY



MILL PATCHING
 N.T.S.



SMALL PATCHING AREAS
 N.T.S.

NO.	DATE:	REVISION	BY:	APP'D

DRAWN BY: _____
 APP'D BY: _____

benesch
 Alfred Benesch & Company
 123 SE 6th, Suite 200
 Topeka, Kansas 66603
 Ph 785.409.6507 Job No. - 1325-600005.00

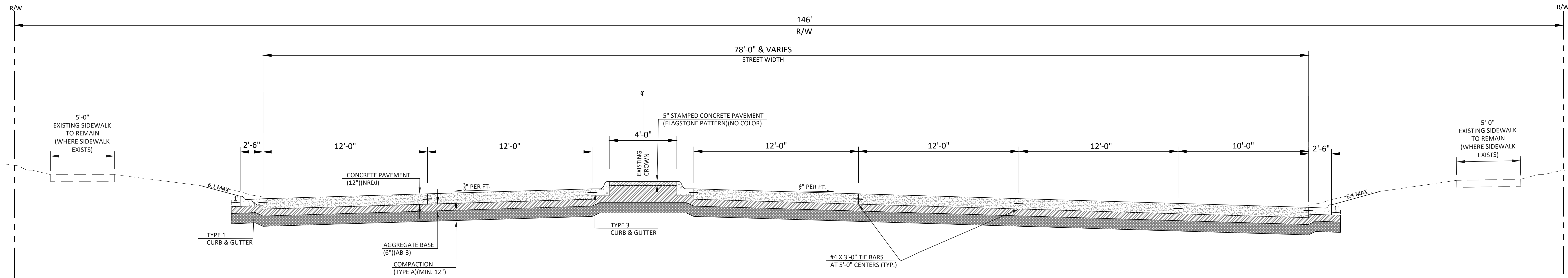
TOPEKA
 Public Works
 ENGINEERING
 620 SE MADISON St. • 2nd Floor • TOPEKA, KS 66607
 Phone: (785) 368-3842 • Fax: (785) 368-3881

TOPEKA BLVD
 IMPROVEMENTS:
 PROJECT #701038.00

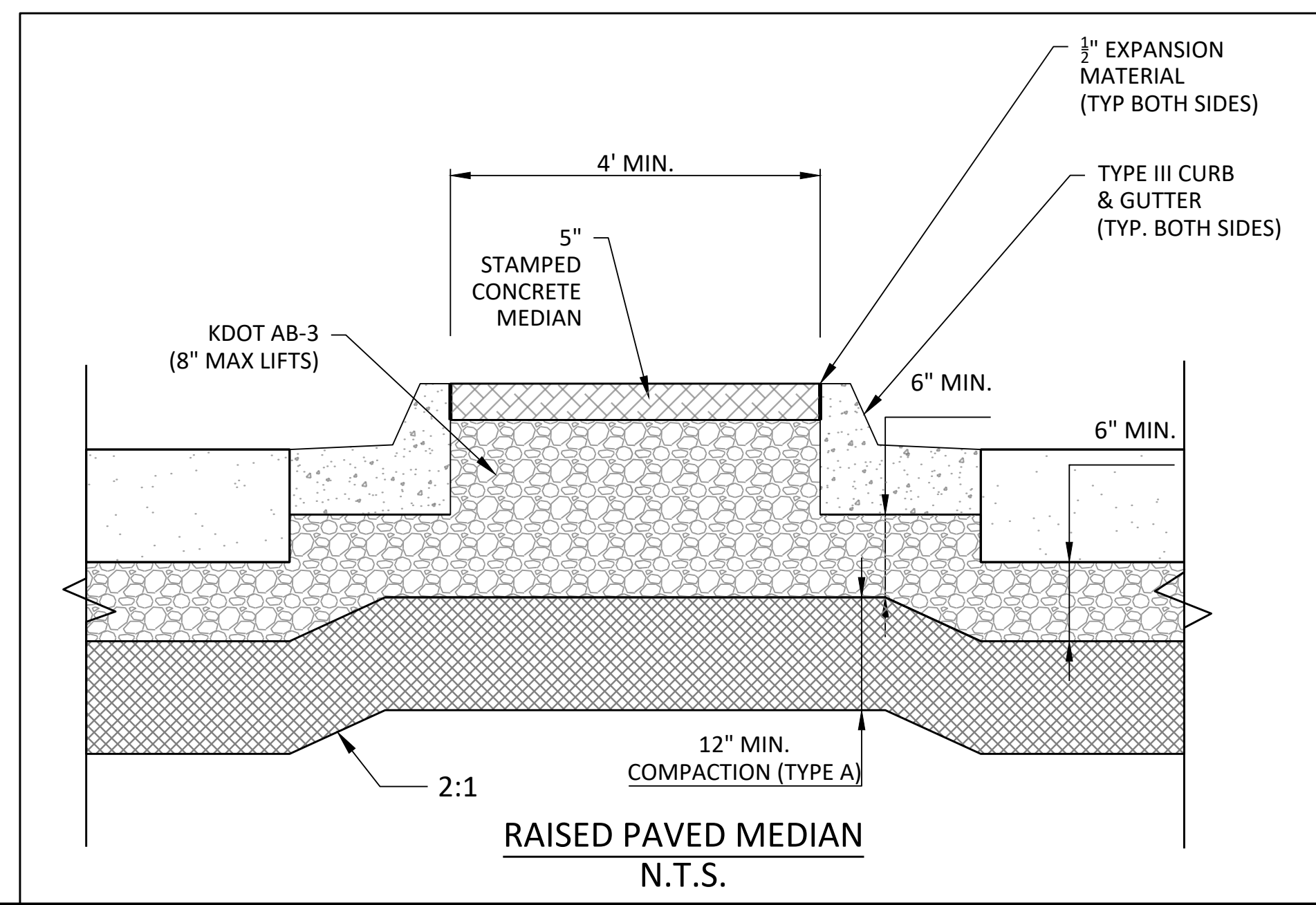
TYPICAL SECTIONS

DATE: APR 2026
 SHEET: 11 OF 122
 PROJ.: 701038.00

- TYPICAL SECTION NOTES:
1. MEDIAN FILL THICKNESS WILL VARY BUT WILL BE PAID PER SQUARE YARD AS "AGGREGATE BASE (6") (KDOT AB-3)" REGARDLESS OF THE THICKNESS.
 2. LONGITUDINAL JOINTS TO BE TIED WITH DEFORMED TIE BARS AS SHOWN.
 3. TRANSVERSE JOINTS TO BE DOWELED WITH 1-1/4" DOWELS ON 12" CENTERS.
 4. CROSS SLOPE MAY VARY FROM TYPICAL SHOWN. SEE PAVING PLAN FOR VARIATIONS.



C TYPICAL SECTION NO. 3
 Scale: N.T.S.
 SW 37TH ST. AND SW TOPEKA BLVD INTERSECTION
 SW 29TH ST. AND SW TOPEKA BLVD INTERSECTION



File Location: Y:\Kansas\1325-60005\1325-600005-PROD-TYP SECS (TOPEKA BLVD).dwg [Plot Date: 4/17/2026 1:49:34 PM] [Last Saved: 4/3/2026 8:15:46 AM; Blee]

NO.	DATE:	REVISION	BY:	APP'D

DRAWN BY: _____
 APP'D BY: _____

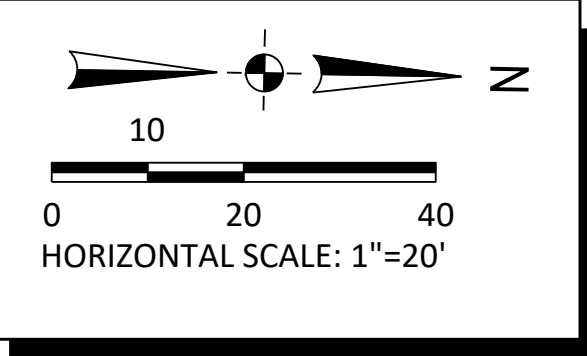
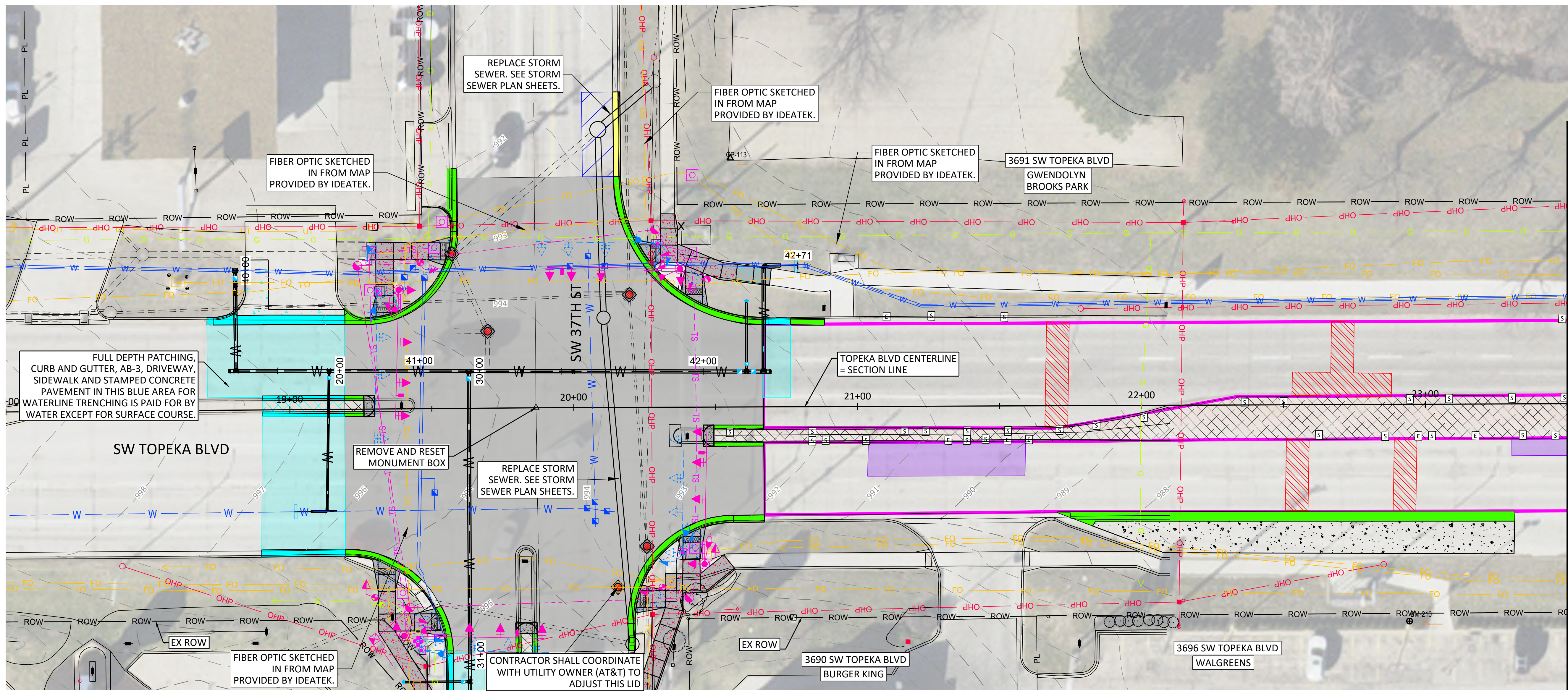
benesch
 Alfred Benesch & Company
 123 SE 6th, Suite 200
 Topeka, Kansas 66603
 Ph 785.409.6507 Job No. - 1325-600005.00

TOPEKA
 Public Works
 ENGINEERING
 620 SE MADISON St. • 2nd Floor • TOPEKA, KS 66607
 Phone: (785) 368-3842 • Fax: (785) 368-3881

TOPEKA BLVD
 IMPROVEMENTS:
 PROJECT #701038.00

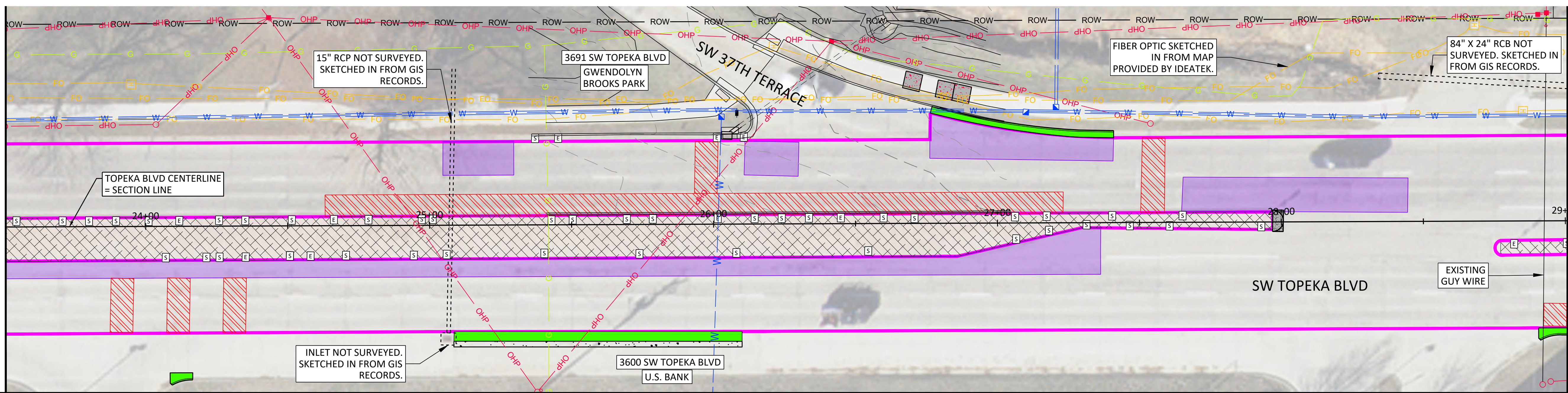
TYPICAL SECTIONS

DATE: APR 2026
 SHEET: 12 OF 122
 PROJ.: 701038.00



MATCHLINE 23+50

- LEGEND**
- 2" ASPHALT ON 10" CONCRETE (PAID BY STREET)
 - 2" ASPHALT ON 10" CONCRETE (10" CONCRETE PAID BY STORM)
 - 8" CONCRETE VALLEY GUTTER
 - 8" CONCRETE PAVEMENT (PAID BY STREET)
 - 8" CONCRETE PAVEMENT (PAID BY STORM)
 - MILL PATCHING
 - MILL AND OVERLAY LIMITS
 - CONCRETE SIDEWALK (PAID BY STREET)
 - CONCRETE SIDEWALK (PAID BY STORM)
 - 12" CONCRETE PAVEMENT
 - SIDEWALK RAMP
 - 5" STAMPED CONCRETE PAVEMENT
 - ADJUST EXISTING MANHOLE (CONCRETE MANHOLE DIAMOND)
 - ADJUST EX WATER VALVE
 - CURB & GUTTER REPLACEMENT (PAID BY STREET)
 - CURB & GUTTER REPLACEMENT (PAID BY STORM)
 - EPOXY CONCRETE CRACK REPAIR
 - SEALANT CONCRETE CRACK REPAIR



MATCHLINE 23+50

MATCHLINE 29+00

NO.	DATE:	REVISION	BY:	APPD

DRAWN BY: _____
 APPD BY: _____

benesch
 Alfred Benesch & Company
 123 SE 6th, Suite 200
 Topeka, Kansas 66603
 Ph 785.409.6507 Job No. - 1325-600005.00

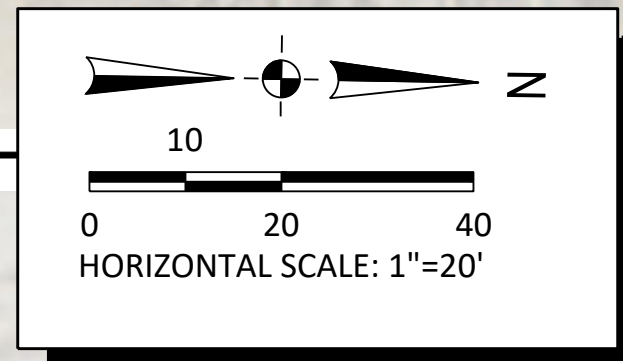
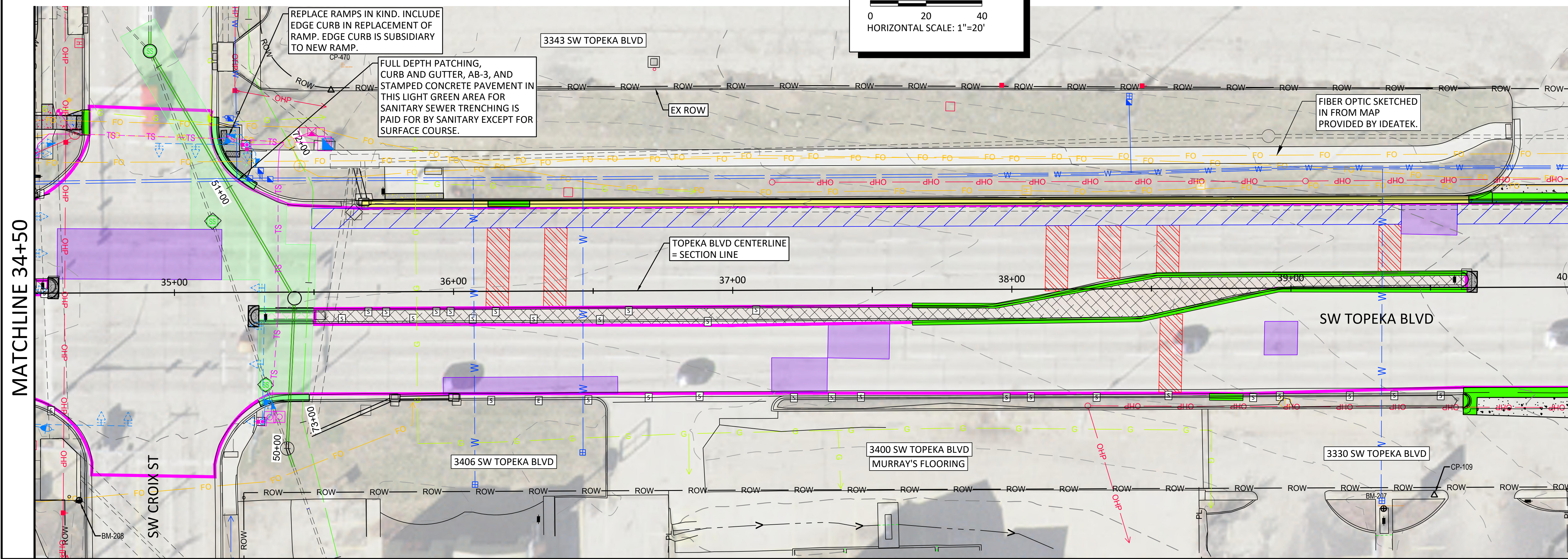
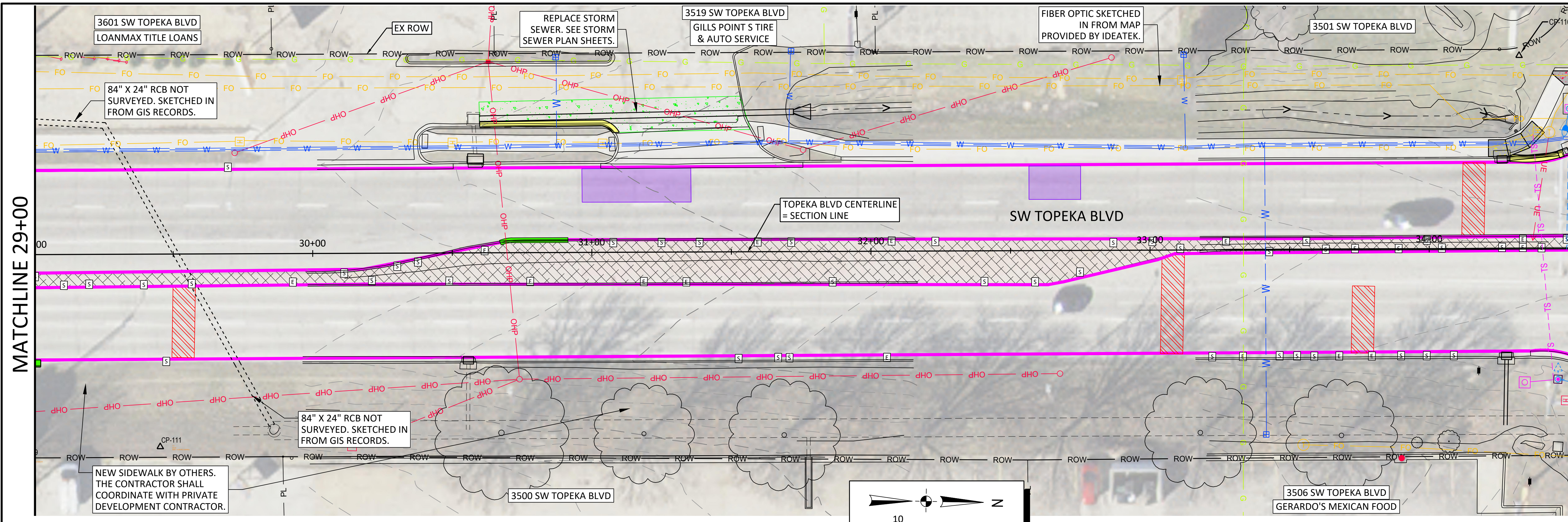
TOPEKA
Public Works
ENGINEERING
 620 SE MADISON St. • 2nd Floor • TOPEKA, KS 66607
 Phone: (785) 368-3842 • Fax: (785) 368-3881

TOPEKA BLVD
 IMPROVEMENTS:
 PROJECT #701038.00

STREET PLAN
 18+00 TO 29+00

DATE: APR 2026
 SHEET: 13 OF 122
 PROJ.: 701038.00

I:\Projects\1325-600005-00_Topeka_Bldg\Eng_Docs\General\Sheets\1325-600005-PROD-TOPEKA BLVD STREET Plan TOPEKA BLVD.dwg [Plot Date: 4/20/2026 11:53:59 AM] [Last Saved: 4/20/2026 11:12:00 AM: jrenter]



MATCHLINE 34+50

MATCHLINE 40+00

- LEGEND**
- 2" ASPHALT ON 10" CONCRETE (PAID BY STREET)
 - 2" ASPHALT ON 10" CONCRETE (10" CONCRETE PAID BY STORM)
 - 8" CONCRETE VALLEY GUTTER
 - 8" CONCRETE PAVEMENT (PAID BY STREET)
 - 8" CONCRETE PAVEMENT (PAID BY STORM)
 - MILL PATCHING
 - MILL AND OVERLAY LIMITS
 - CONCRETE SIDEWALK (PAID BY STREET)
 - CONCRETE SIDEWALK (PAID BY STORM)
 - 12" CONCRETE PAVEMENT
 - SIDEWALK RAMP
 - 5" STAMPED CONCRETE PAVEMENT
 - ADJUST EXISTING MANHOLE (CONCRETE MANHOLE DIAMOND)
 - ADJUST EX WATER VALVE
 - CURB & GUTTER REPLACEMENT (PAID BY STREET)
 - CURB & GUTTER REPLACEMENT (PAID BY STORM)
 - EPOXY CONCRETE CRACK REPAIR
 - SEALANT CONCRETE CRACK REPAIR

MATCHLINE 29+00

MATCHLINE 34+50

NO.	DATE:	REVISION	BY:	APPD

DRAWN BY: _____
 APP'D BY: _____

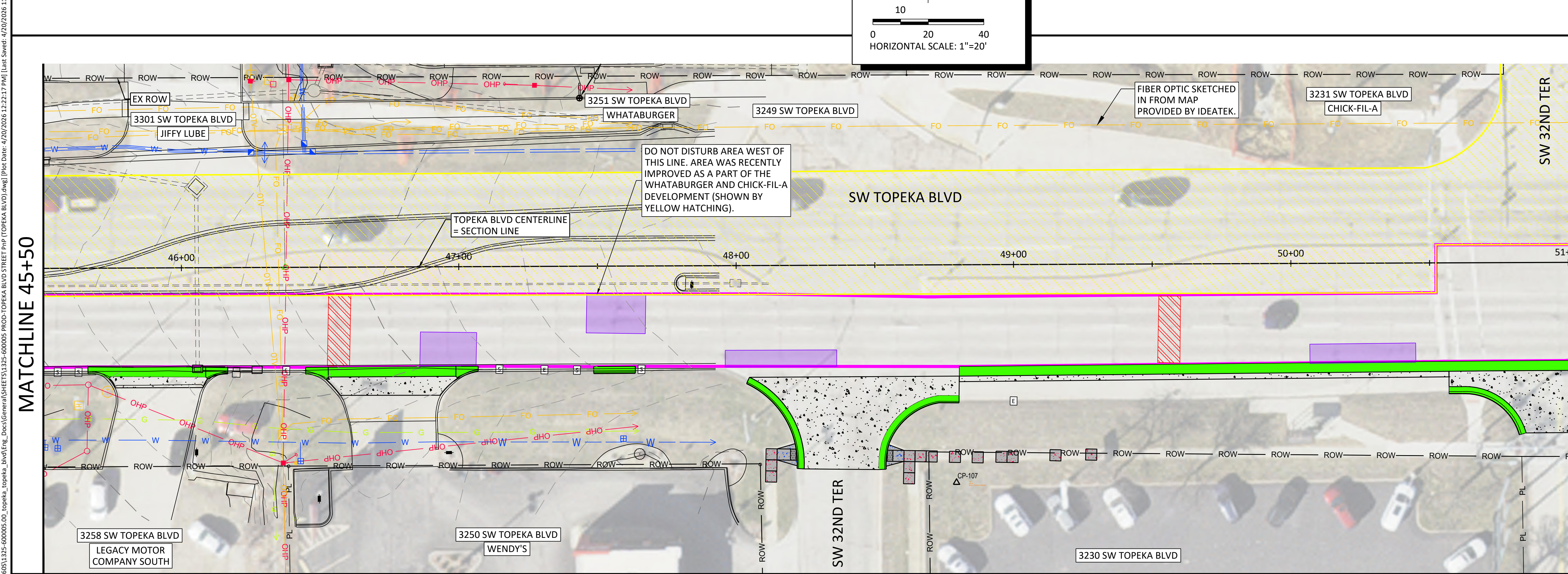
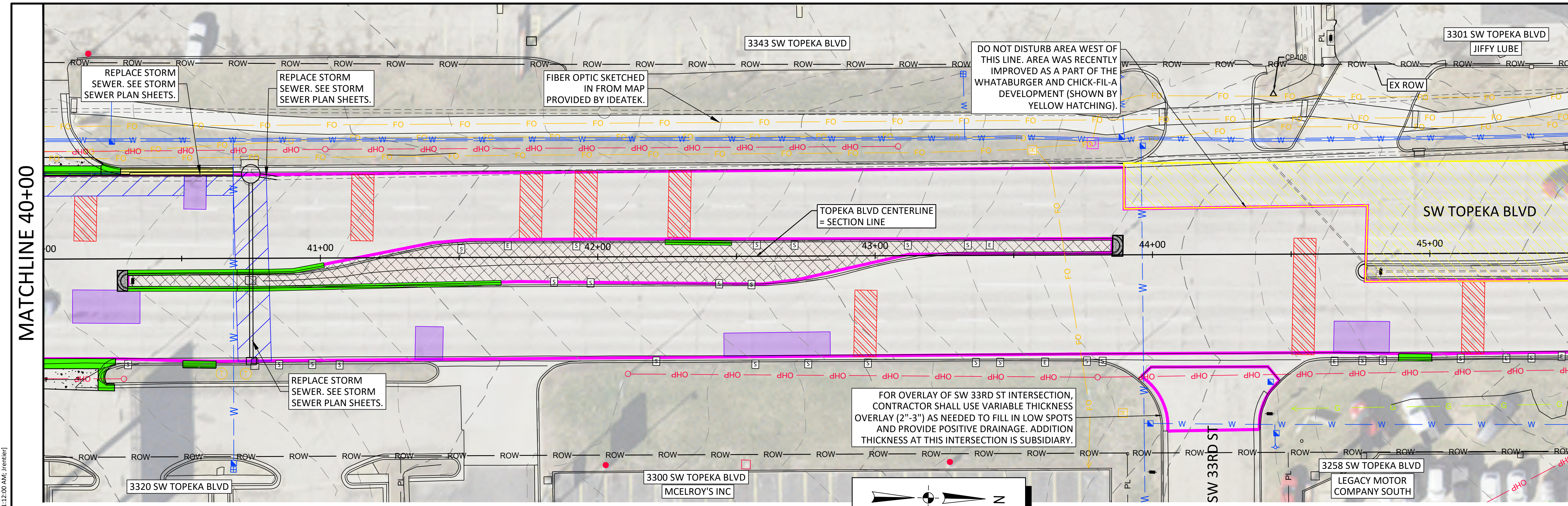
benesch
 Alfred Benesch & Company
 123 SE 6th, Suite 200
 Topeka, Kansas 66603
 Ph 785.409.6507 Job No. - 1325-600005.00

TOPEKA
 Public Works
 ENGINEERING
 620 SE MADISON St. • 2nd Floor • TOPEKA, KS 66607
 Phone: (785) 368-3842 • Fax: (785) 368-3881

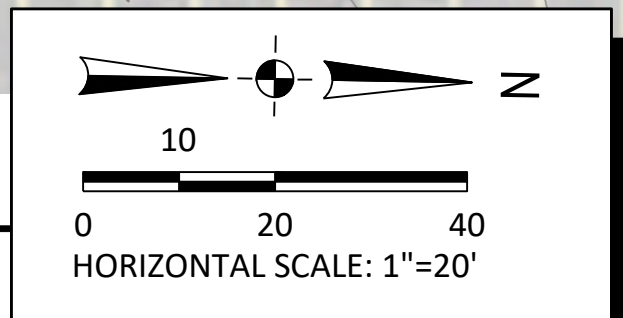
TOPEKA BLVD
 IMPROVEMENTS:
 PROJECT #701038.00

STREET PLAN
 29+00 TO 40+00

DATE: APR 2026
 SHEET: 14 OF 122
 PROJ.: 701038.00



- LEGEND**
- 2" ASPHALT ON 10" CONCRETE (PAID BY STREET)
 - 2" ASPHALT ON 10" CONCRETE (10" CONCRETE PAID BY STORM)
 - 8" CONCRETE VALLEY GUTTER
 - 8" CONCRETE PAVEMENT (PAID BY STREET)
 - 8" CONCRETE PAVEMENT (PAID BY STORM)
 - MILL PATCHING
 - MILL AND OVERLAY LIMITS
 - CONCRETE SIDEWALK (PAID BY STREET)
 - CONCRETE SIDEWALK (PAID BY STORM)
 - 12" CONCRETE PAVEMENT
 - SIDEWALK RAMP
 - 5" STAMPED CONCRETE PAVEMENT
 - ADJUST EXISTING MANHOLE (CONCRETE MANHOLE DIAMOND)
 - ADJUST EX WATER VALVE
 - CURB & GUTTER REPLACEMENT (PAID BY STREET)
 - CURB & GUTTER REPLACEMENT (PAID BY STORM)
 - EPOXY CONCRETE CRACK REPAIR
 - SEALANT CONCRETE CRACK REPAIR



File Location: Y:\Kansas\1325-60005\1325-60005-00_topoka_topeka_bv\Eng_Docs\General\Sheets\1325-60005-00-TOPEKA BLVD STREET Plan (TOPEKA BLVD).dwg | Plot Date: 4/20/2026 12:22:17 PM | Last Saved: 4/20/2026 11:12:00 AM | Printer:

NO.	DATE:	REVISION	BY:	APPD

DRAWN BY: _____
 APPD BY: _____

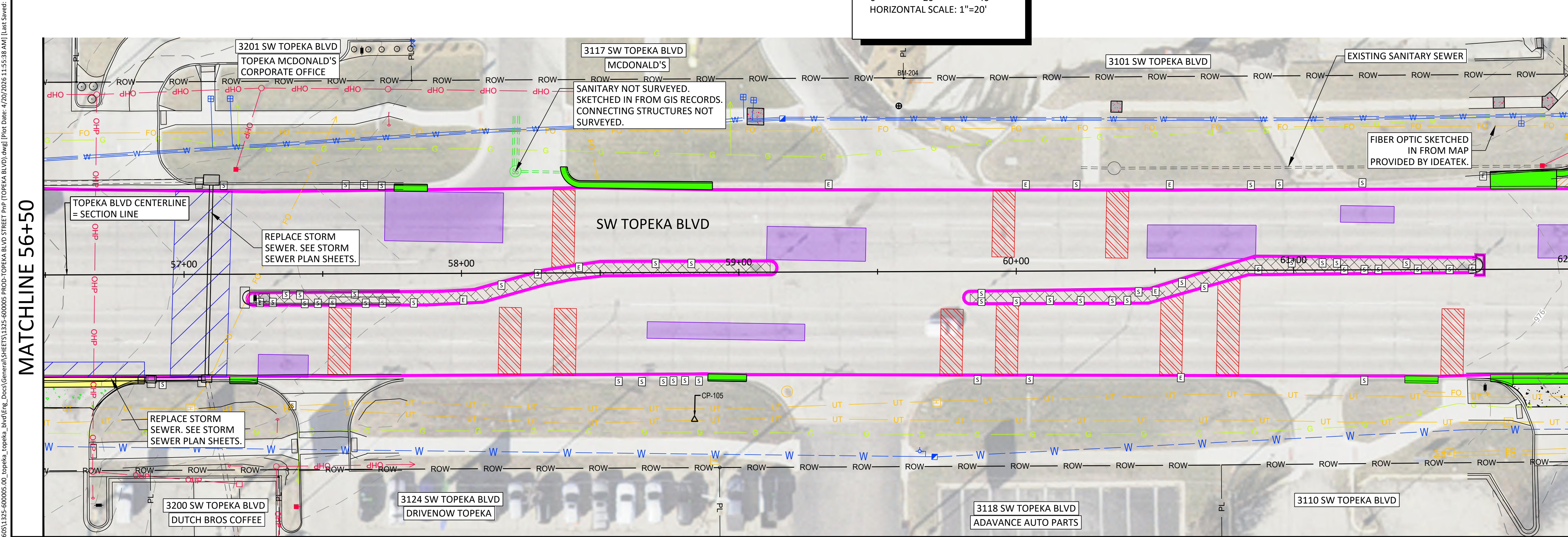
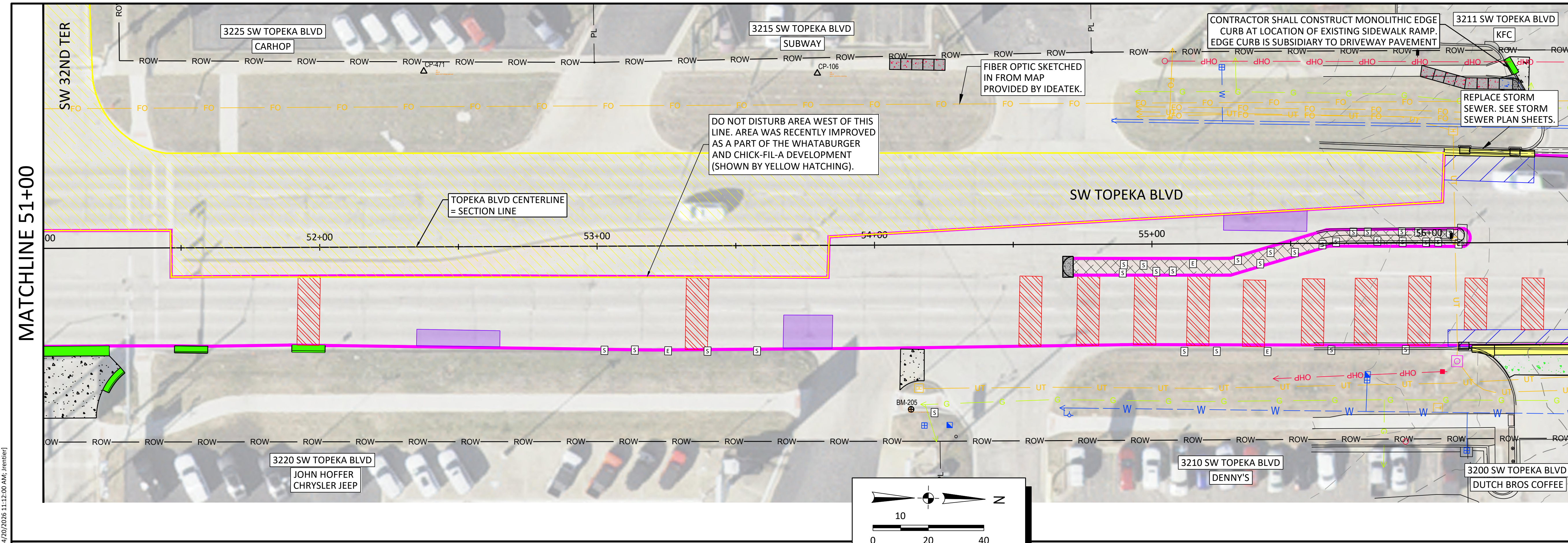
benesch
 Alfred Benesch & Company
 123 SE 6th, Suite 200
 Topeka, Kansas 66603
 Ph 785.409.6507 Job No. - 1325-600005.00

TOPEKA
 Public Works
 ENGINEERING
 620 SE MADISON St. • 2nd Floor • TOPEKA, KS 66607
 Phone: (785) 368-3842 • Fax: (785) 368-3881

TOPEKA BLVD
IMPROVEMENTS:
 PROJECT #701038.00

STREET PLAN
40+00 TO 51+00

DATE: APR 2026
 SHEET: 15 OF 122
 PROJ.: 701038.00



LEGEND

- 2" ASPHALT ON 10" CONCRETE (PAID BY STREET)
- 2" ASPHALT ON 10" CONCRETE (10" CONCRETE PAID BY STORM)
- 8" CONCRETE VALLEY GUTTER
- 8" CONCRETE PAVEMENT (PAID BY STREET)
- 8" CONCRETE PAVEMENT (PAID BY STORM)
- MILL PATCHING
- MILL AND OVERLAY LIMITS
- CONCRETE SIDEWALK (PAID BY STREET)
- CONCRETE SIDEWALK (PAID BY STORM)
- 12" CONCRETE PAVEMENT
- SIDEWALK RAMP
- 5" STAMPED CONCRETE PAVEMENT
- ADJUST EXISTING MANHOLE (CONCRETE MANHOLE DIAMOND)
- ADJUST EX WATER VALVE
- CURB & GUTTER REPLACEMENT (PAID BY STREET)
- CURB & GUTTER REPLACEMENT (PAID BY STORM)
- EPOXY CONCRETE CRACK REPAIR
- SEALANT CONCRETE CRACK REPAIR

NO.	DATE:	REVISION	BY:	APPD

DRAWN BY: _____
 APPD BY: _____

benesch
 Alfred Benesch & Company
 123 SE 6th, Suite 200
 Topeka, Kansas 66603
 Ph 785.409.6507 Job No. - 1325-600005.00

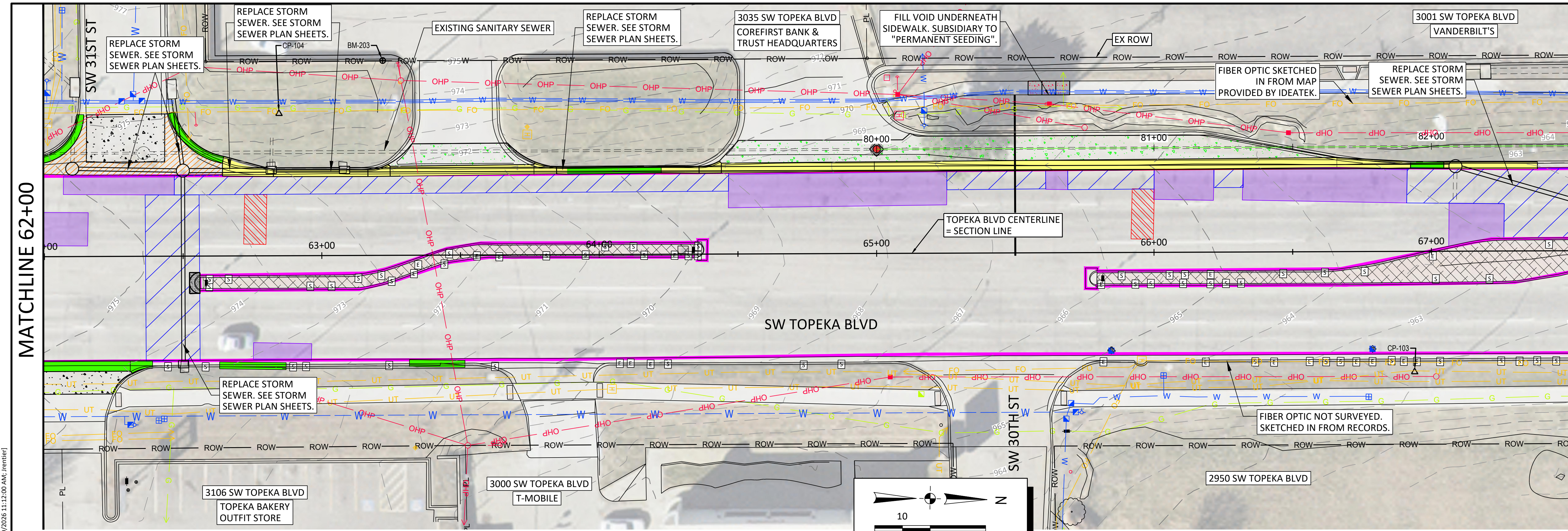
TOPEKA
Public Works
ENGINEERING
 620 SE MADISON St. • 2nd Floor • TOPEKA, KS 66607
 Phone: (785) 368-3842 • Fax: (785) 368-3881

TOPEKA BLVD
 IMPROVEMENTS:
 PROJECT #701038.00

STREET PLAN
 51+00 TO 62+00

DATE: APR 2026
 SHEET: 16 OF 122
 PROJ.: 701038.00

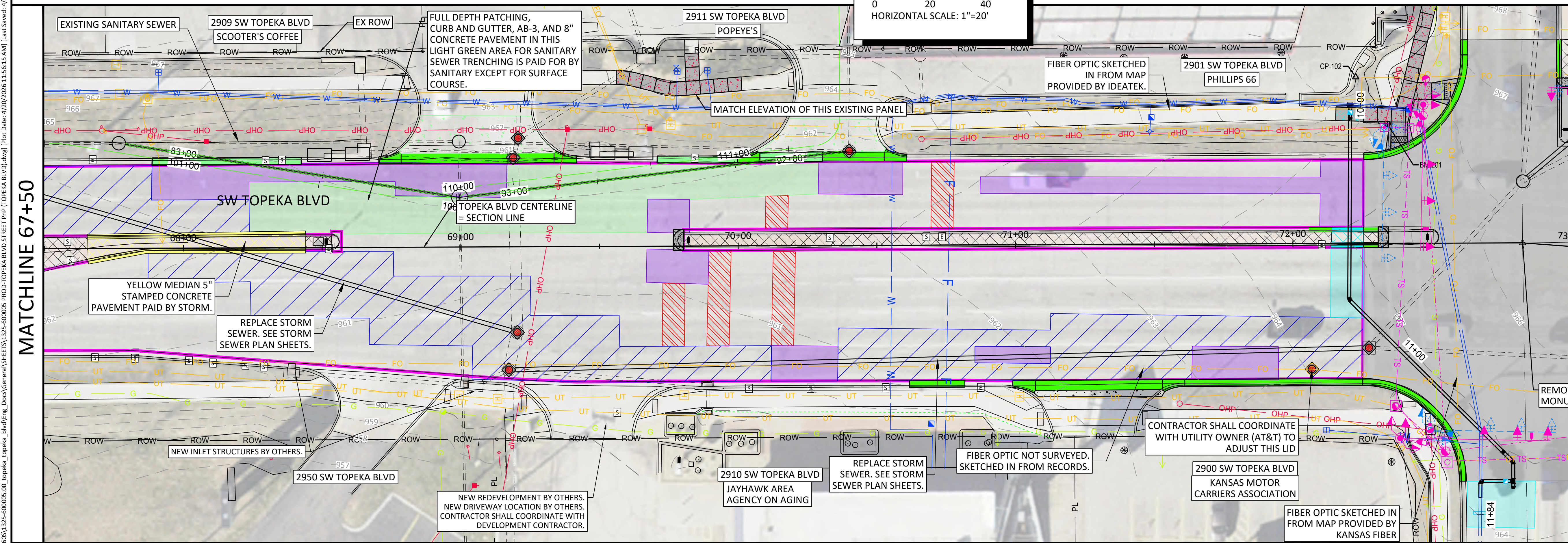
File Location: y:\Kansas\1325-6005\1325-600005-PROD-TOPEKA BLVD STREET Plan (TOPEKA BLVD).dwg [Plot Date: 4/20/2026 11:55:38 AM] [Last Saved: 4/20/2026 11:12:00 AM] [Printer]



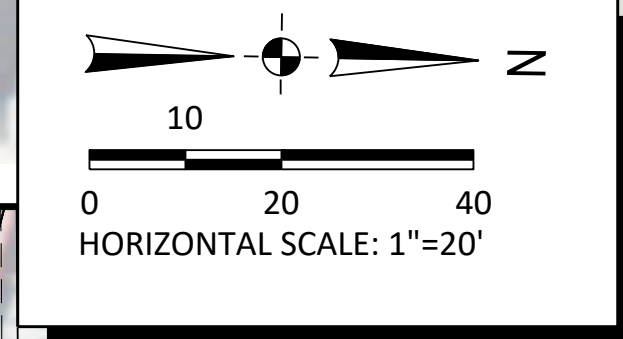
MATCHLINE 62+00

MATCHLINE 67+50

LEGEND	
	2" ASPHALT ON 10" CONCRETE (PAID BY STREET)
	2" ASPHALT ON 10" CONCRETE (10" CONCRETE PAID BY STORM)
	8" CONCRETE VALLEY GUTTER
	8" CONCRETE PAVEMENT (PAID BY STREET)
	8" CONCRETE PAVEMENT (PAID BY STORM)
	MILL PATCHING
	MILL AND OVERLAY LIMITS
	CONCRETE SIDEWALK (PAID BY STREET)
	CONCRETE SIDEWALK (PAID BY STORM)
	12" CONCRETE PAVEMENT
	SIDEWALK RAMP
	5" STAMPED CONCRETE PAVEMENT
	ADJUST EXISTING MANHOLE (CONCRETE MANHOLE DIAMOND)
	ADJUST EX WATER VALVE
	CURB & GUTTER REPLACEMENT (PAID BY STREET)
	CURB & GUTTER REPLACEMENT (PAID BY STORM)
	EPOXY CONCRETE CRACK REPAIR
	SEALANT CONCRETE CRACK REPAIR



MATCHLINE 67+50



NO.	DATE:	REVISION	BY:	APPD

DRAWN BY: _____
 APPD BY: _____

benesch
 Alfred Benesch & Company
 123 SE 6th, Suite 200
 Topeka, Kansas 66603
 Ph 785.409.6507 Job No. - 1325-600005.00

TOPEKA
 Public Works
 ENGINEERING
 620 SE MADISON ST. • 2nd Floor • TOPEKA, KS 66607
 Phone: (785) 368-3842 • Fax: (785) 368-3881

TOPEKA BLVD
 IMPROVEMENTS:
 PROJECT #701038.00

STREET PLAN
 62+00 TO 74+00

DATE: APR 2026
 SHEET: 17 OF 122
 PROJ.: 701038.00

File Location: y:\Kansas\1325-60005\1325-60005-PROD-TOPEKA BLVD STREET Plan (TOPEKA BLVD).dwg [Plot Date: 4/20/2026 11:56:15 AM] [Last Saved: 4/20/2026 11:12:00 AM] [Printer]